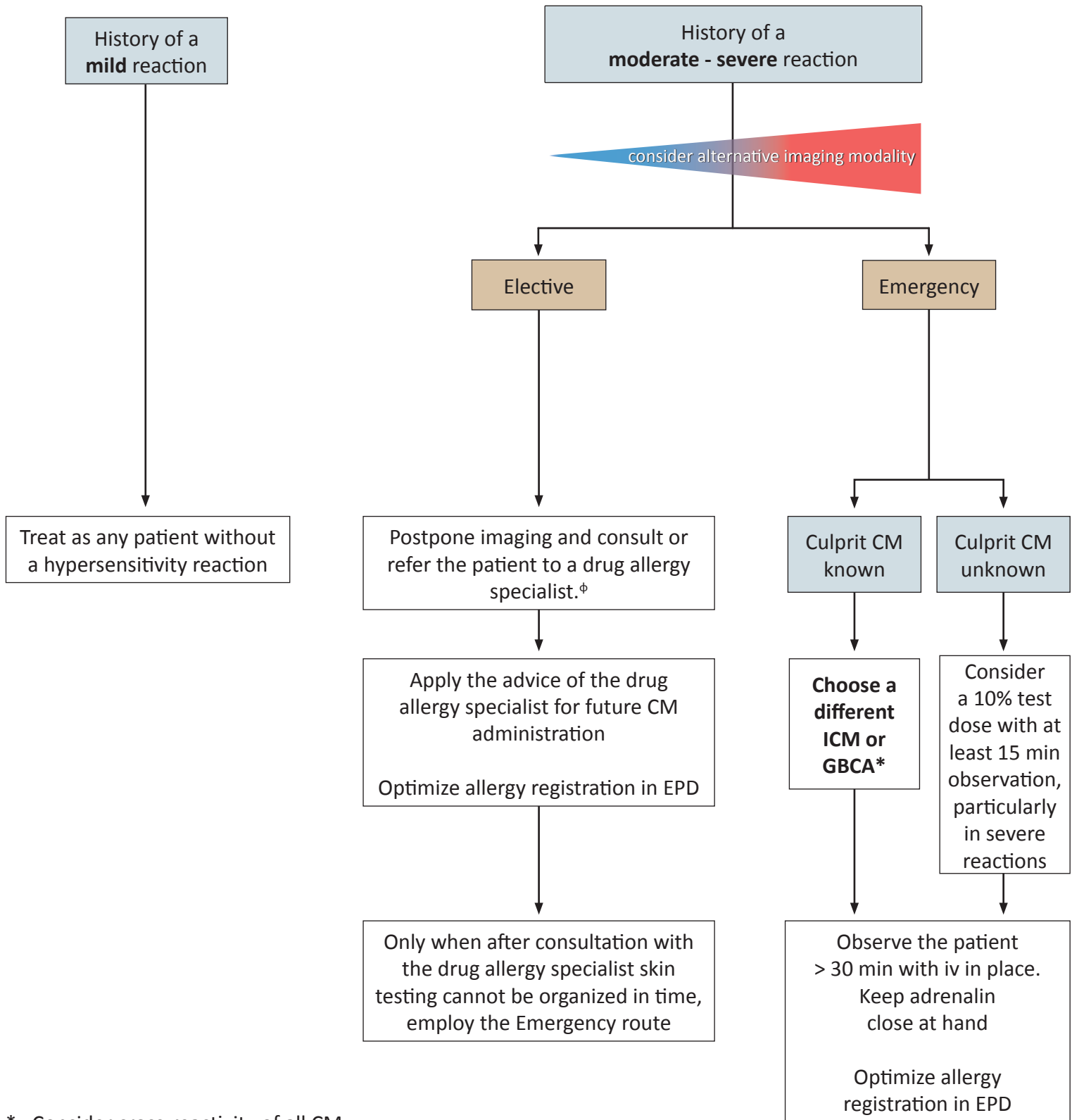


# What To Do after a Previous Immediate Hypersensitivity Reaction (IHR)



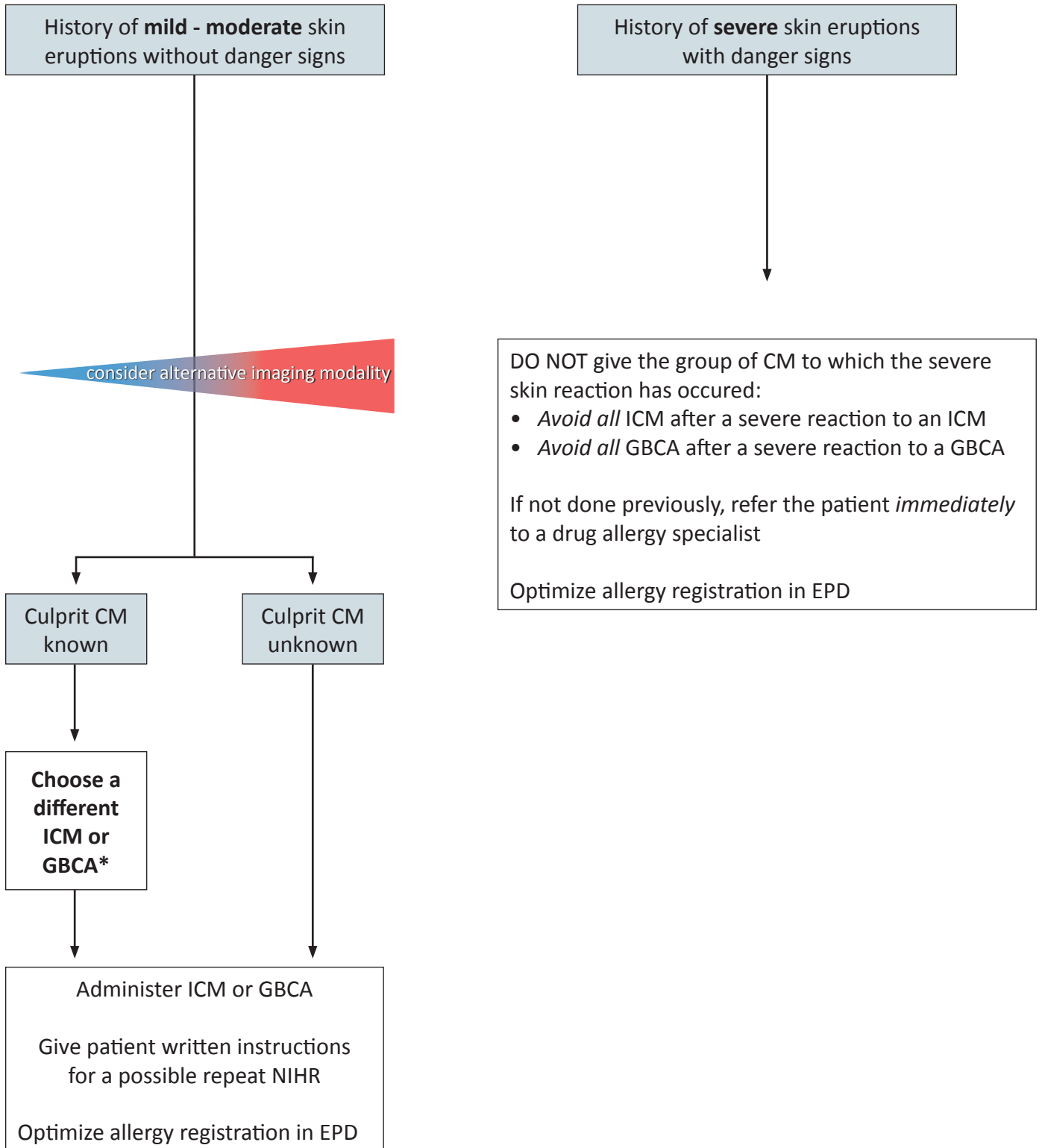
\* Consider cross-reactivity of all CM

ϕ Moderate IHR without cutaneous involvement have a low risk for allergy, consider contacting a drug allergy specialist

## Severity of previous immediate hypersensitivity reactions

Mild	Scattered urticaria/pruritus, limited cutaneous oedema, itchy/scratchy throat, nasal congestion, and sneezing/conjunctivitis/rhinorrhoea.
Moderate	Diffuse urticaria/pruritus, diffuse erythema with stable vital signs, facial oedema without dyspnoea, throat tightness/hoarseness without dyspnoea, and mild wheezing/bronchospasm.
Severe	Diffuse erythema with hypotension, diffuse/facial oedema with dyspnoea, laryngeal oedema with stridor, severe wheezing/bronchospasm with hypoxia, and generalized anaphylactic reaction/shock.

# What To Do after a Previous Non-Immediate Hypersensitivity Reaction (NIHR)



\* Consider cross-reactivity of all CM and increased risk of iso-osmolar ICM for NIHR

## Danger signs of non-immediate hypersensitivity reactions:

- Erosive and/or haemorrhagic lesions.
- Blistering and skin disruption.
- Mucosal involvement.
- Extracutaneous organ involvement (high fever, abnormal liver or kidney function, lymphadenopathy)